

Pilgrim

Mobile Secure Networking Complex



infocom.ua

2024



Pilgrim



Web Page

MOBILE SECURE NETWORKING COMPLEX



Pilgrim is a mobile complex equipped with a wireless/wired VPN router and a built-in battery. It enables secure data transmission channels, allowing work within private corporate networks while ensuring extended autonomy for portable computers and other devices.

The complex is designed for scenarios where high mobility and independence from traditional wired networks and power grids are essential. It proves invaluable when operating in remote areas lacking advanced infrastructure, frequently changing work locations during the day, facing unreliable power supplies, or needing to establish secure communication channels quickly regardless of local connectivity options.

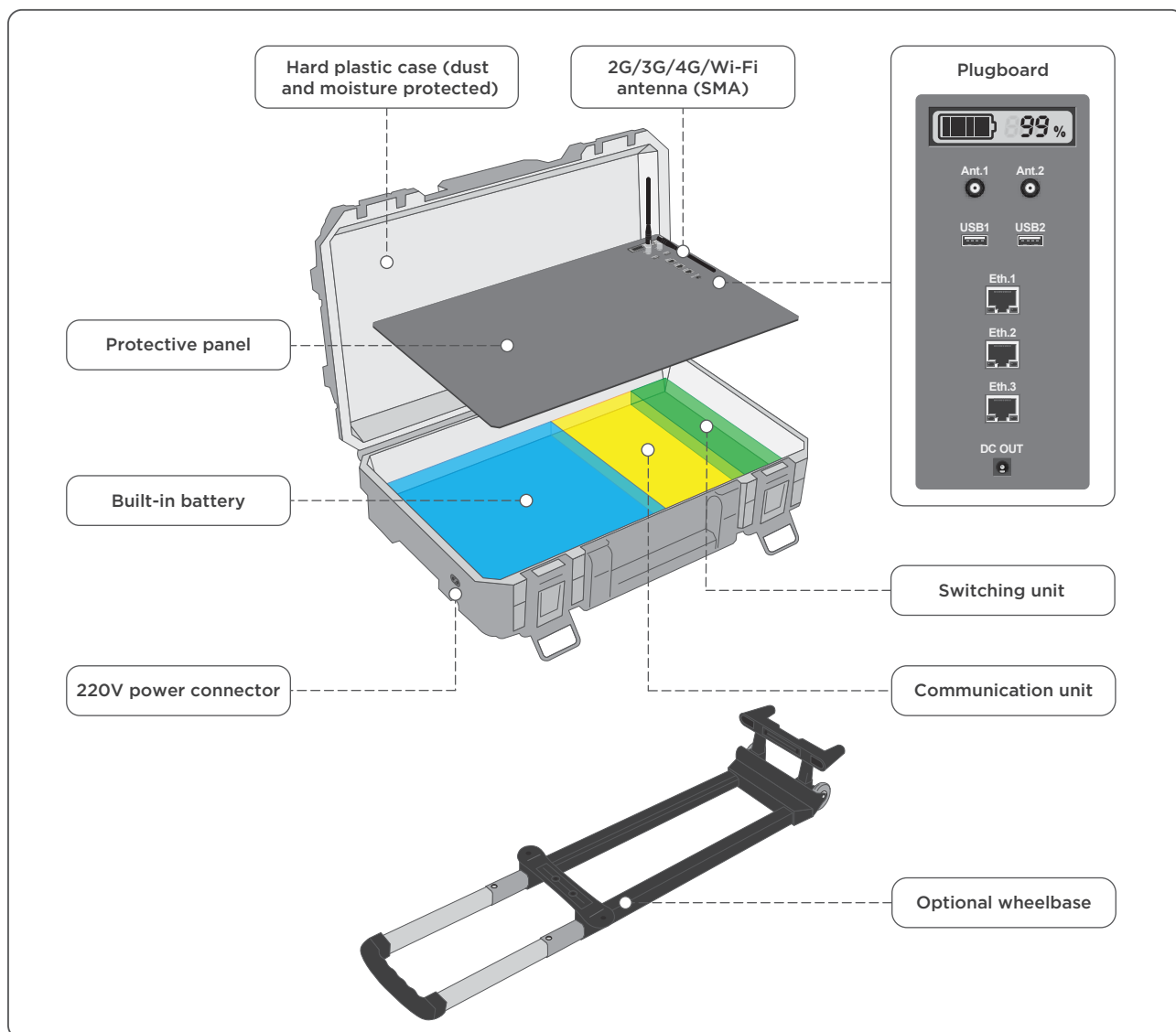
Pilgrim can be deployed for the rapid establishment of operational centers for emergency services, military command posts, or police forces.



The primary purpose of the Pilgrim mobile complex is to enable autonomous connection to corporate networks and the Internet. To achieve this, the complex's router can be equipped with two independent 2G/3G/4G modems, allowing data channels to be divided into primary and backup connections, or a built-in modem and Wi-Fi module, depending on your preferences.

In addition to wireless connectivity, Pilgrim is equipped with three Gigabit Ethernet ports, enabling integration with satellite communication systems like Starlink*, wired networks when available, or providing connectivity for other devices.

*When powering Starlink from the built-in battery, Pilgrim's total autonomy can reach up to 5 hours, depending on battery capacity and with the satellite antenna heating disabled.



Pilgrim complex design



The Pilgrim complex is housed in a robust plastic case, resistant to dust and moisture, measuring 35 x 56.4 x 16.5 cm, with a dedicated service compartment separated from the main volume by a protective panel. The main compartment of the complex provides ample space to accommodate up to two standard 15.6-inch laptops or other measurement or communication equipment.

The service compartment, located at the bottom of the case, is designed to house the battery pack, VPN router, and communication block. The complex's typical plugboard includes a battery charge level display, SMA antenna connectors, and three Gigabit Ethernet ports.

For powering external devices, the panel can optionally be equipped with USB connectors and DC or AC outlets with the required output voltage.

Key Features of Pilgrim:

- Extended autonomy, high mobility, rapid deployment.
- L2/L3 VPN network support: 12tp, IPsec, OpenVPN, PPTP, GRE, EoIP.
- Internet access, including through a Secure Internet Access Node (SIAN).
- Routing protocols: BGP, OSPF, RIP; traffic filtering, NAT, firewall.
- External device power supply: USB, DC/AC (optional).
- Battery capacity: 120-600 Wh (32,000 - 162,000 mAh / 3.7V).